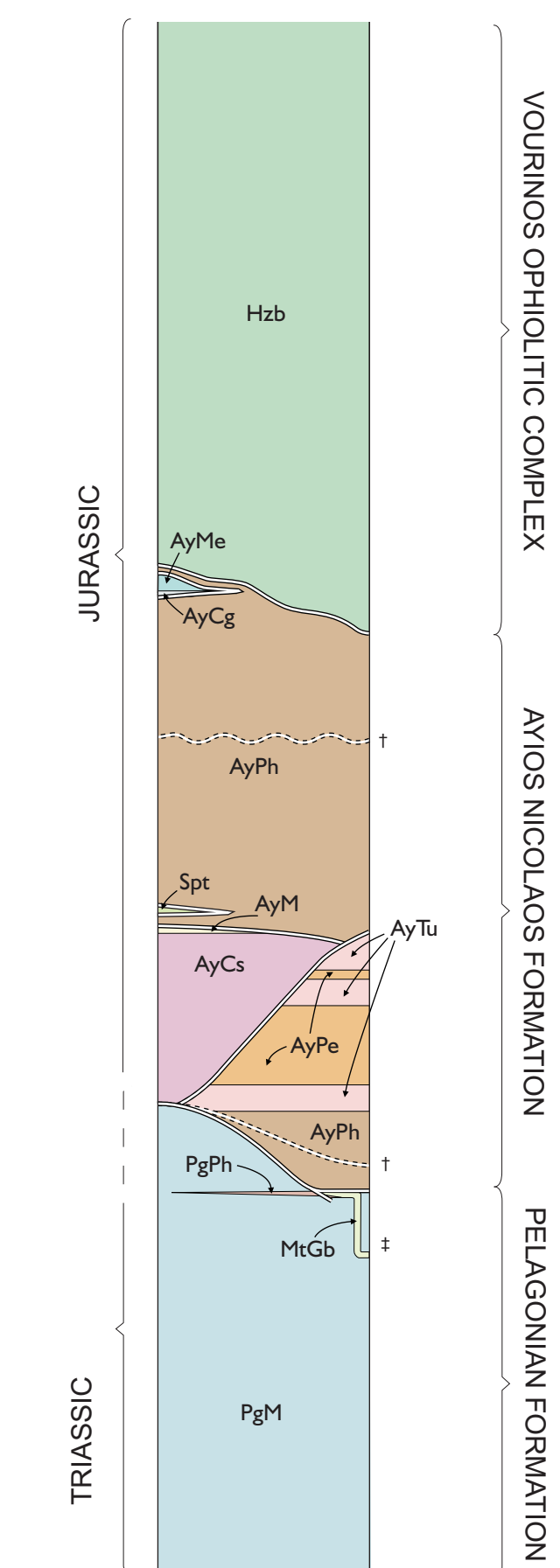


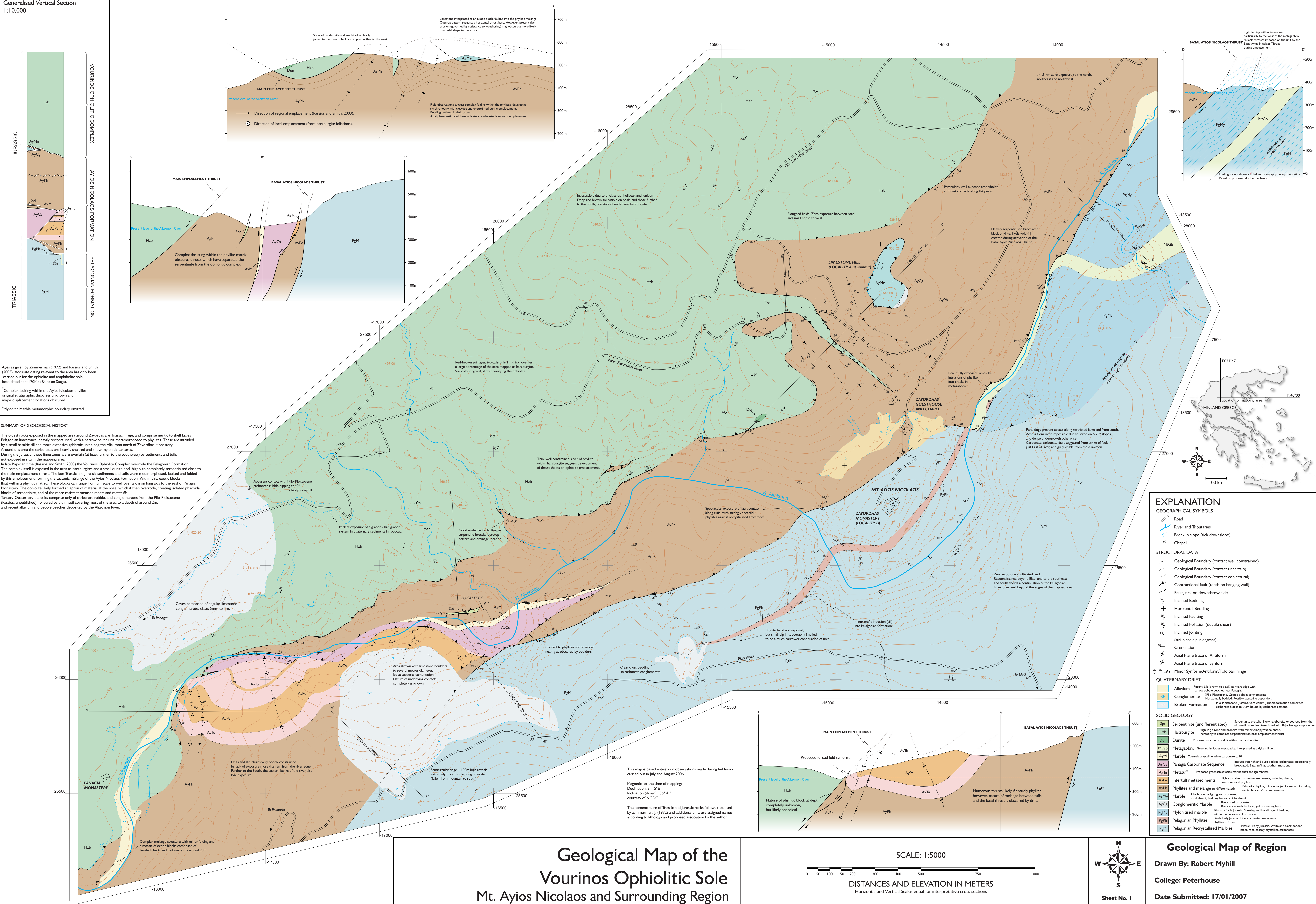
STRATIGRAPHIC COLUMN
Generalised Vertical Section
1:10,000



Ages as given by Zimmerman (1972) and Rassios and Smith (2003). Accurate dating relevant to the area has only been carried out for the ophiolite and amphibolite sole, both dated at ~ 170 Ma (Bajocian Stage).

[†]Complex faulting within the Ayios Nicolaos phyllite original stratigraphic thickness unknown and major displacement locations obscured.

SUMMARY OF GEOLOGICAL HISTORY

[illegible]

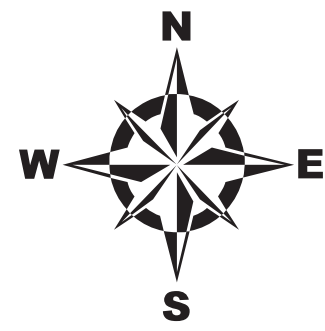
Geological Map of the Vourinos Ophiolitic Sole Mt. Ayios Nicolaos and Surrounding Region

SCALE: 1:5000



DISTANCES AND ELEVATION IN METERS

Horizontal and Vertical Scales equal for interpretative cross sections



Sheet No. 1

Geological Map of Region

Drawn By: Robert Myhill

College: Peterhouse

Date Submitted: 17/01/2007